

## Low feed rate vibratory feeder Type "VF01" 230 or 110V model

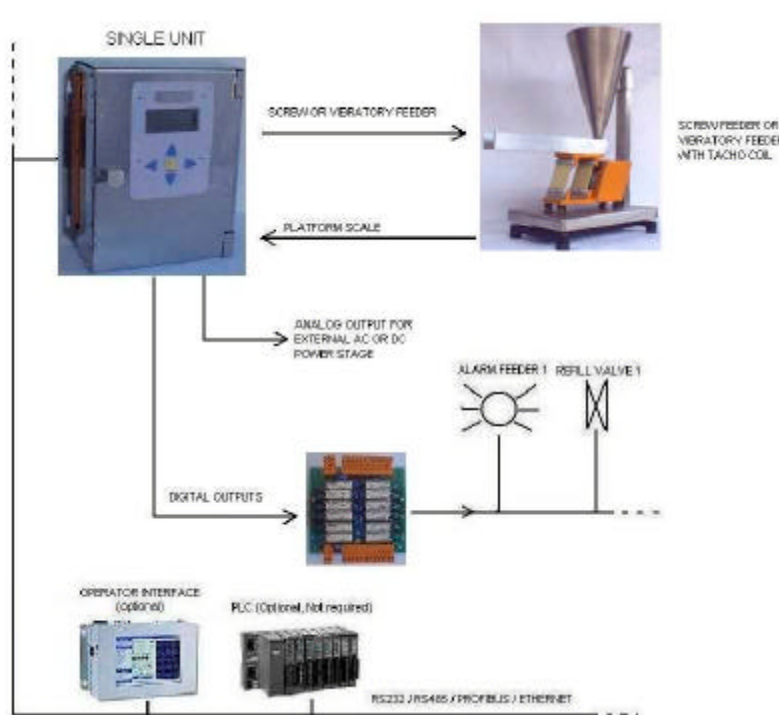


- High precision vibratory feeder for gravimetric or volumetric applications
- Wide feed rate range from about 40 g/h to 100 kg/h depending on the material characteristics
- Lightweight construction for improved low feed rate performance
- Special vibrating trays for even lower feed rates
- Very smooth vibration over all its working range
- Easy integration with the gravimetric "Single Unit" for an high performance gravimetric system with extremely good price to performance ratio. Ask for a quotation.
- Easy integration with the "Multiline" multifeeder gravimetric system
- Available for 230V or 110 V

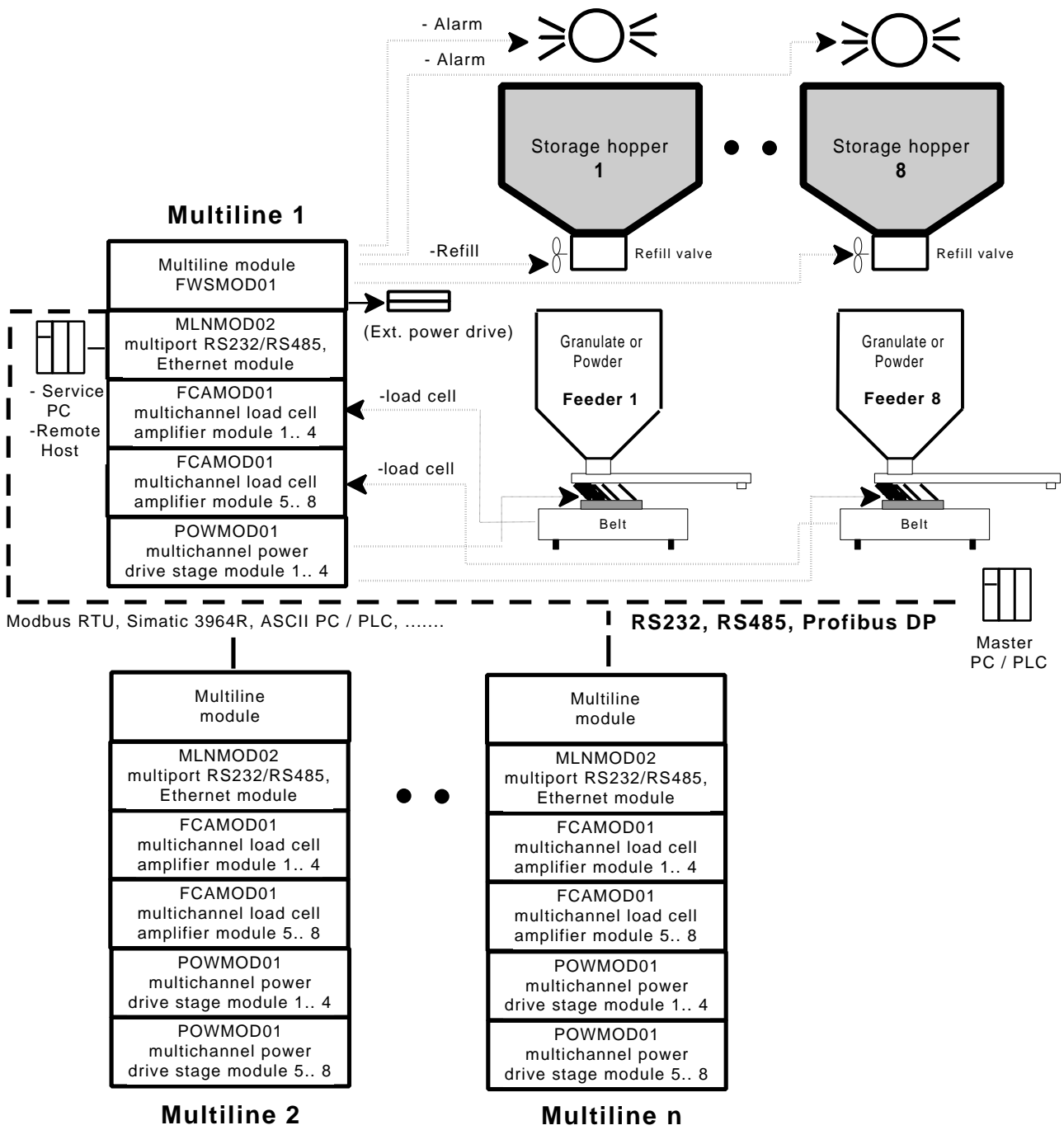
### Short description

The VF01 lightweight vibratory feeder is mainly suitable for low feed rate gravimetric or volumetric dosing of solid materials used in the industry (extrusion, compound, plastic, ...), food, agriculture, chemical industry, pharmaceutical and others. It has been designed to offer an high performance gravimetric system in the price range where others just offer volumetric feeders. Its price to performance ratio make hard to decide for a volumetric solution with almost the same price of our gravimetric system with configuration and operator control software. This feeder combined with our high precision gravimetric control systems allows a very wide feed rate range. Depending on the material characteristics it's possible to reach feed rates even lower than  $65 \text{ cm}^3 / \text{h}$  that means about 40 grams per hour with granulate with a specific weight of  $0.61 \text{ kg} / \text{dm}^3$ . The same feeder can be used up to 100 kg/h. However other models are available to always use a suitable feeder depending on the required feed rate range.

### Integration with "Single unit" gravimetric control



# Integration with "Multiline" multifeeder gravimetric system



## Technical specification :

Hopper volume	: Depends on the required feed rate range
Feed rate	: $65\text{cm}^3 / \text{h} \dots 165\text{dm}^3 / \text{h}$ (depends on the product)
Working range	: up to 2500 : 1 (depends on the product)
Product flow speed	: $0.05\text{mm} / \text{s} \dots 10\text{cm} / \text{s}$ (depends on the product)
Available models	: VF01-230 (for 230 V) VF01-110 (for 110 V)

Authorized Agency :